

HUNTERS®

HERE TO GET *you* THERE



Andrews Close

Brierley Hill, DY5 2XB



Andrews Close

Brierley Hill, DY5 2XB

Offers In Excess Of £245,000



Front of The Property

To the front of the property there is a block paved driveway with gated side access, canopy with double glazed composite door leading to the entrance hall.

Entrance Hall

10'5" x 6'10" (3.2 x 2.1)

With a double glazed composite door leading from the front of the property, double glazed windows to front, stairs to the first floor landing, storage cupboard, laminate floor, double sliding doors to lounge and a central heating radiator.

Lounge

18'4" x 10'5" (5.6 x 3.2)

With double sliding doors leading from the entrance hall, feature fire place with gas fire and marble hearth, double glazed sliding doors to garden, door to dining room and a central heating radiator.

Dining Room

11'1" x 7'2" (3.4 x 2.2)

With a door leading from the lounge, double glazed window to front, sliding door to kitchen, storage cupboard, laminate floor and a central heating radiator.

Kitchen

10'9" x 7'6" (3.3 x 2.3)

With a sliding door leading from the dining room, fitted with a range of wall and base units, work surfaces, one and a half stainless steel sink and drainer, space for cooker, stainless steel cooker hood above, plumbing for washing machine, space for low level fridge and freezer and other appliances, double glazed window and door to garden.

Landing

With stairs leading from the entrance hall, doors to various rooms, double glazed window to side, loft access and a central heating radiator.

Bedroom One

10'5" x 7'6" (3.2 x 2.3)

With a door leading from the landing, fitted wardrobes and drawers, double glazed window to rear and a central heating radiator.

Bedroom Two

12'1" x 6'10" (3.7 x 2.1)

With a door leading from the landing, double glazed window to front and a central heating radiator.

Bedroom Three

10'9" x 7'6" (3.3 x 2.3)

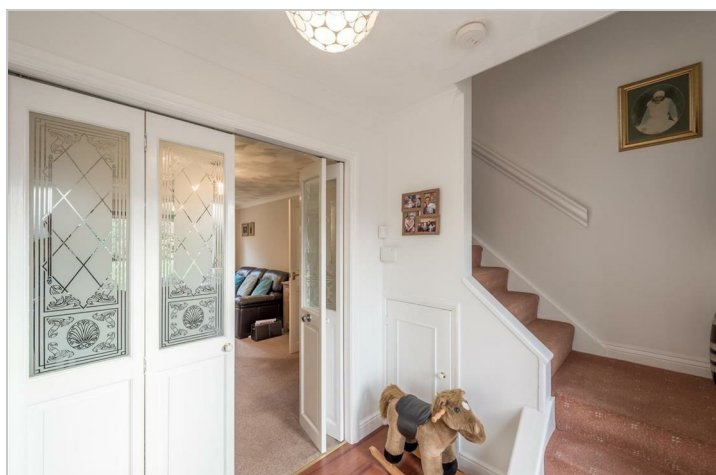
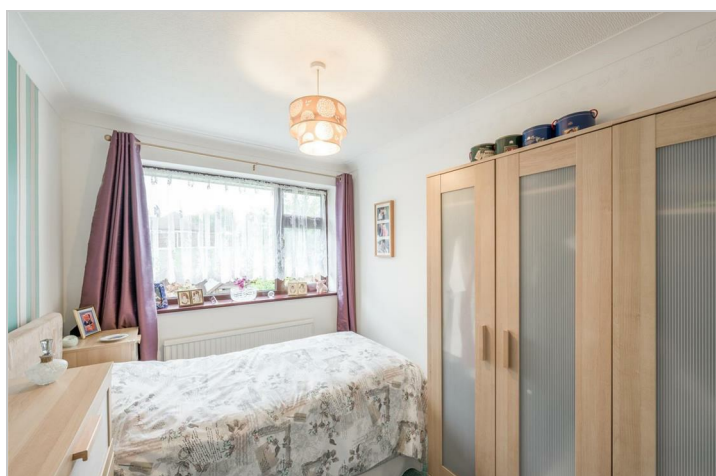
With a door leading from the landing, double glazed window to rear and a central heating radiator.

Bathroom

With a door leading from the landing, double glazed windows to front and side, bath with shower over, storage cupboard, WC, wash hand basin, laminate floor, part tiled walls and a central heating radiator.

Garden

With double glazed sliding doors from the lounge to a patio area, raised lawn, mature shrub borders, gated side access, outside tap and garden shed.



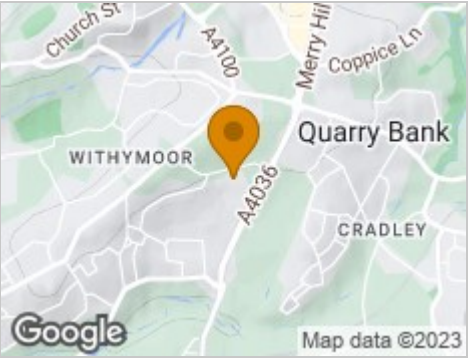
Road Map



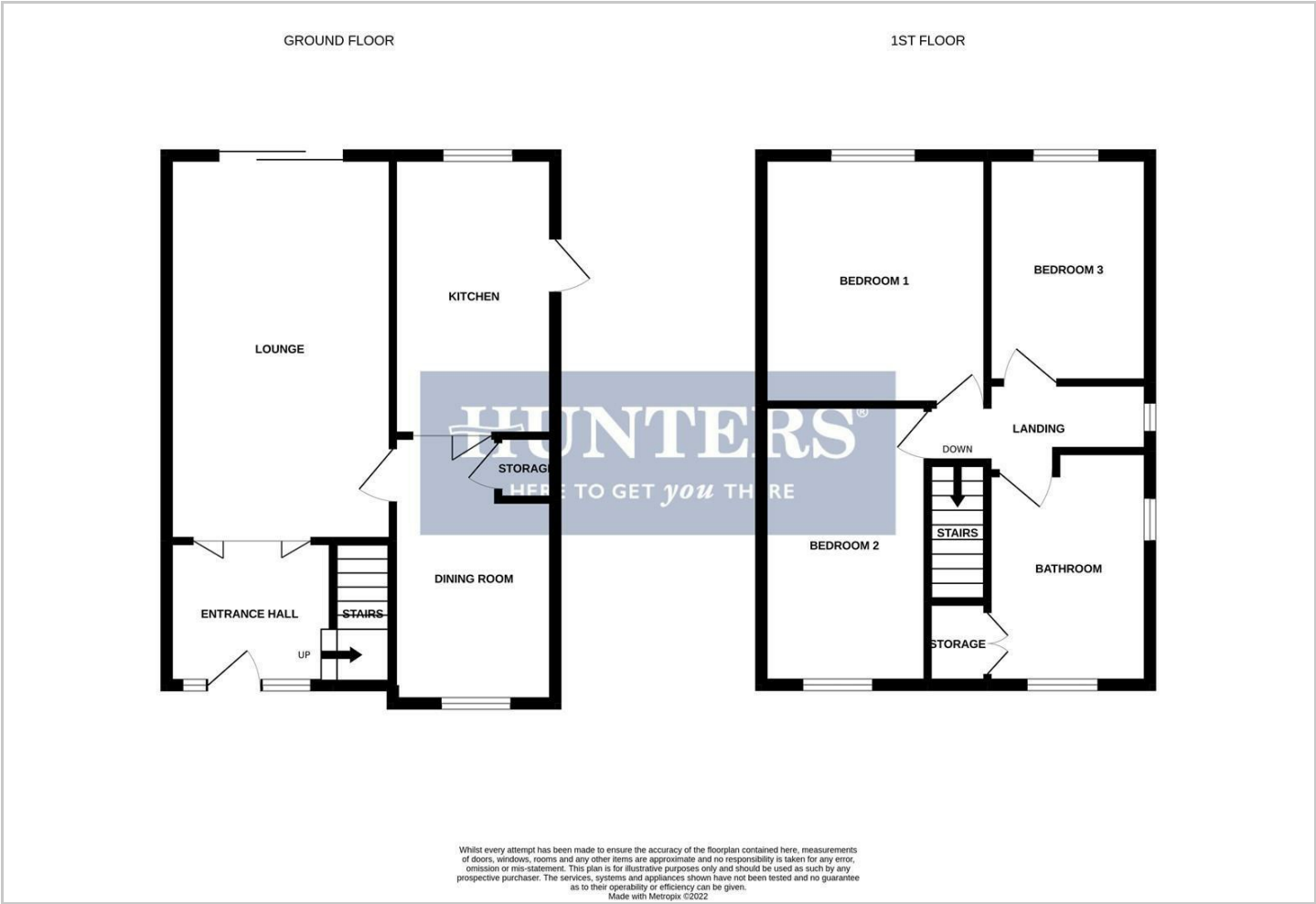
Hybrid Map



Terrain Map



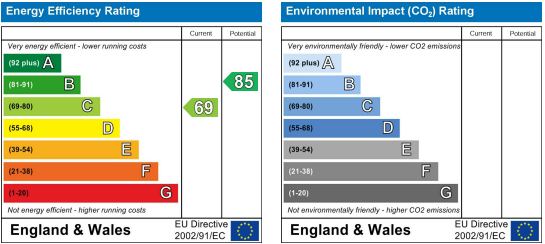
Floor Plan



Viewing

Please contact our Hunters Stourbridge Office on 01384 443331 if you wish to arrange a viewing appointment for this property or require further information.

Energy Efficiency Graph



These particulars are intended to give a fair and reliable description of the property but no responsibility for any inaccuracy or error can be accepted and do not constitute an offer or contract. We have not tested any services or appliances (including central heating if fitted) referred to in these particulars and the purchasers are advised to satisfy themselves as to the working order and condition. If a property is unoccupied at any time there may be reconnection charges for any switched off/disconnected or drained services or appliances - All measurements are approximate. **THINKING OF SELLING?** If you are thinking of selling your home or just curious to discover the value of your property, Hunters would be pleased to provide free, no obligation sales and marketing advice. Even if your home is outside the area covered by our local offices we can arrange a Market Appraisal through our national network of Hunters estate agents.